

## MOTORISED SLIDING GATE (INDUSTRIAL)

### TECHNICAL SPECIFICATION

**A) GATE STRUCTURE:**

Consisting of Sliding Gate, frame and members made out of suitable Tubular section, flats, angle sheets etc as per drawing.

**B) RACK & PINION DRIVE SYSTEM:**

Consisting of Rack will be made out of M.S. Bright flat of 30 x 12 mm 4 Module fixed to the gate with toughened Allen bolts. The length of rack will be in accordance to length of the gate.

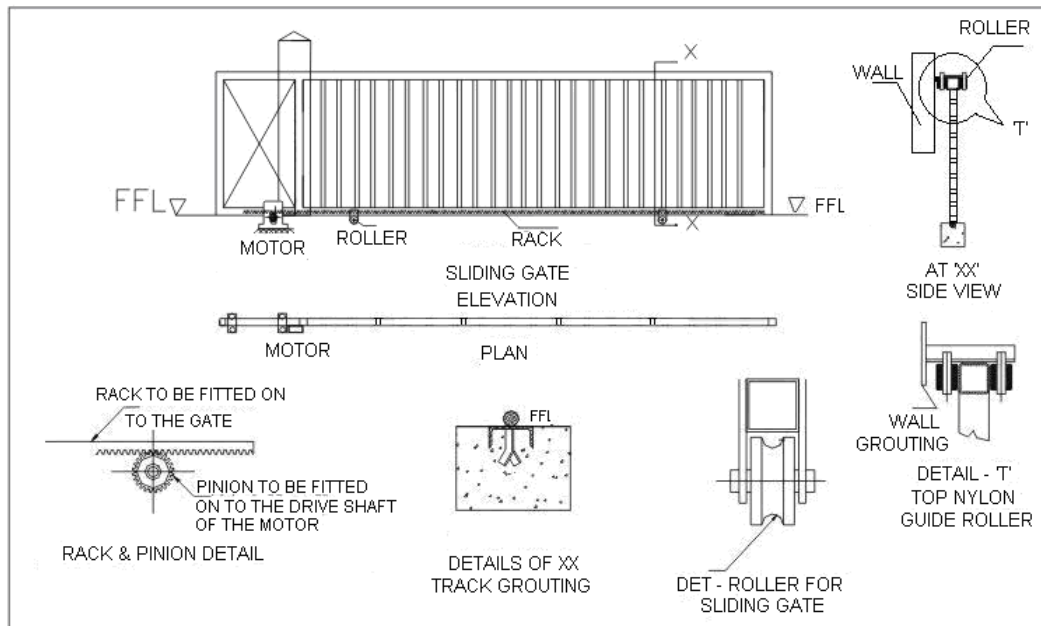
**C) TOP GUIDE ROLLER SYSTEM:** Consisting of 4 Nos of side guide rollers of Nylon 50mm dia x 70mm long turned and assembled with required pin and mountings.

**D) BOTTOM ROLLER SYSTEM:**

Consisting of 2 Nos bottom rollers of 100 dia x 50mm with sealed bearing fixed with brackets made of 10mm plate on which gate will roll.

**E) BOTTOM TRACK:** consisting of the bottom railing made out of ISMC 75mm channel & 25 Round rods.

### GENERAL ARRANGEMENT OF AUTOMATIC SLIDING GATE

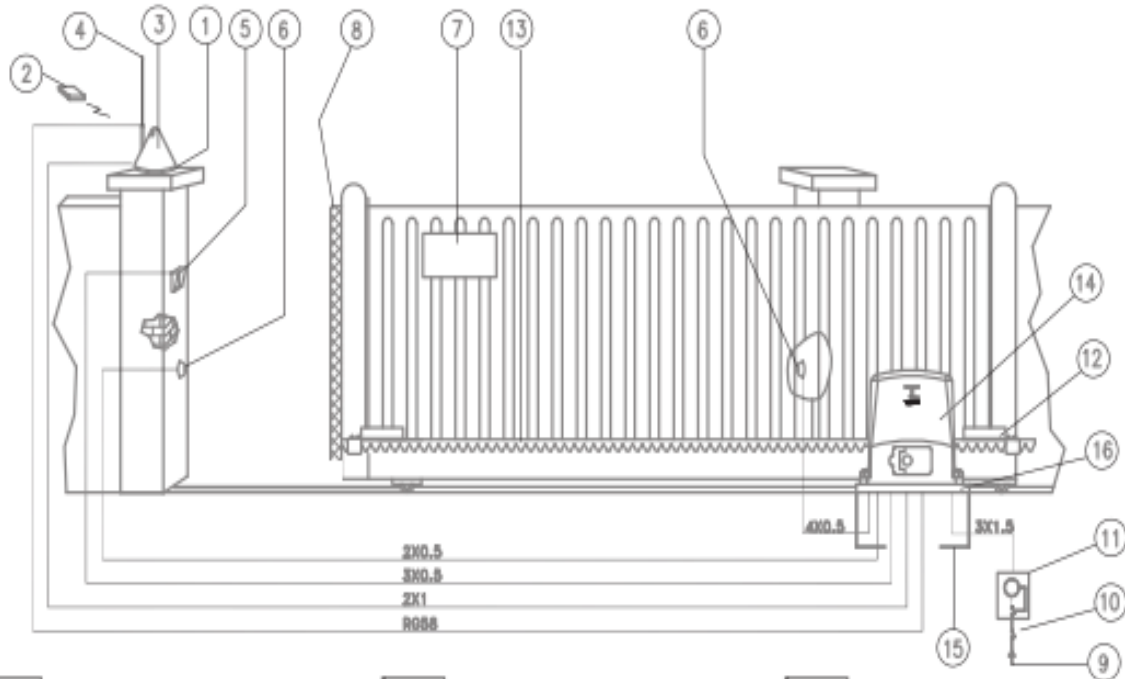


No. 94, 2nd Main, 2nd Stage, BTM Layout, N.S.Palya, Indl. Area, Bannerghatta Road, Bangalore - 560 076. INDIA

Ph. : 080 - 41201056, 26681225 Fax : 080-26684584

E-mail : [sales@concordindia.net](mailto:sales@concordindia.net), [info@concordindia.net](mailto:info@concordindia.net) Website : [www.concordindia.net](http://www.concordindia.net)

### GENERAL ARRANGEMENT OF MOTOR



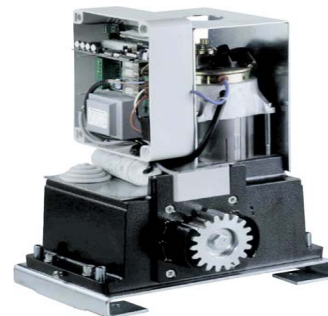
1. Aerial + flashing light support	9. Power line
2. Remote control	10. Main switch
3. Flashing light	11. Differential switch
4. Aerial	12. Limit switch magnet
5. Selector switch	13. Rack
6. Photocell	14. Gear motor
7. Warning sign	15. Foundation base plate (optional)
8. Rubber edge	16. Fixing plate

**MODEL EVO 1200**

**MOTOR VIEW**



**INSIDE MOTOR VIEW**



**MANUAL OPERATION KEY  
SYSTEM**

**MODEL EVO 2000 /EVO 2000T**

**MOTOR VIEW**



**INSIDE MOTOR VIEW**



**MANUAL OPERATION KEY  
SYSTEM**

**FEATURES OF THE SLIDING GATE MOTOR**

- This motor Studied for application up to 2000kgs Reliable with a sturdy aluminum base treated against oxidation, all gears in oil bath.
- 230 V irreversible electromechanical geared motor.
- Electronic brake and built in control unit.
- Complete with magnetic limits and available in two versions: 230 V and 400 V.
- Safe and precise.
- Constant performance in any condition with minimum wear & tear
- The Gate speed as mentioned in the specification is 10 Mts/Per Minute & the motor is also equipped with thermal circuit breakup with a degree of protection.
- This is all coming with a solid product support of **CONCORD** which is already tried and tested by renowned Architects and Builders.

**TECHNICAL SPECIFICATIONS OF THE SLIDING GATE MOTOR**

DESCRIPTION	EVO 1200	EVO 2000	EVO 2000T
Motor power supply	230V	230 V	400 V
Max Motor Current	5.2A	4.3 A	2.7 A
Motor power	1100 W	1000 W	1800 W
Max torque	45 Nm	50 Nm	90 Nm
Thrust	1200 N	1400 N	2500 N
Speed	10 m / min	10 m / min	10 m / min
Work cycles	Intensive	50%	intensive
Capacitor	20mf	20 mf	20mf
Encoder	YES	YES	-
Magnetic limit switch	YES	YES	YES
Thermal protection	150° C	160 °C	160 °C
Electronic slow down	YES	YES	-
Working temperature	-20+55°C	-20+55°C	-20+55°C
Protection level	IP 44	IP 44	IP 44
Weight of motor	17 kg	23 kg	22 kg
Max gate weight	1200 kg	2000 kg	2000 kg

## **STANDARD ACCESSORIES**

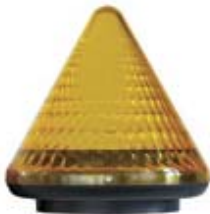
**CONTROL UNIT**  
**MODEL C-T1**



**CONTROL UNIT**  
**MODEL C-T2**



**FLASHING LIGHT**

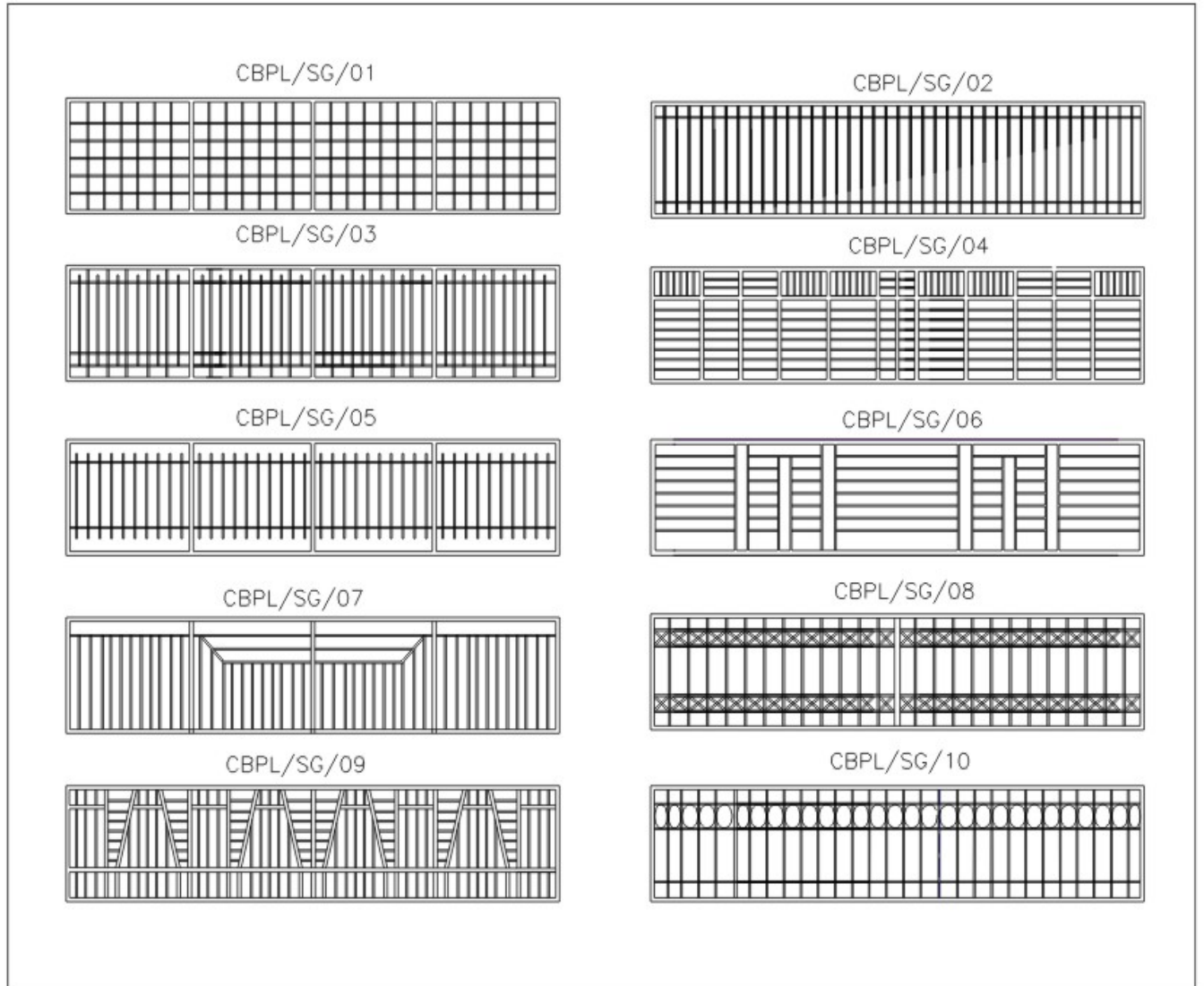


**PHOTOCELLS**





## CONCORD STANDARD DESIGN OF SLIDING GATE



No. 94, 2nd Main, 2nd Stage, BTM Layout, N.S.Palya, Indl. Area, Bannerghatta Road, Bangalore - 560 076. INDIA

Ph. : 080 - 41201056, 26681225 Fax : 080-26684584

E-mail : [sales@concordindia.net](mailto:sales@concordindia.net), [info@concordindia.net](mailto:info@concordindia.net) Website : [www.concordindia.net](http://www.concordindia.net)

## SOME OF OUR PRESITGIUS PROJECTS EXECUTED

### MS MOTORISED SLIDING GATES



**PROJECT: BIAL AIRPORT (LSG SKYCHEF)**



**PROJECT: KODAK**



**PROJECT: ITC**



**PROJECT: BUHLER INDIA**



**PROJECT: ISRO ANTRIKSHA BHAVAN**



**PROJECT: GE SURYA TECH**



**PROJECT: L & T CYBER PARK**



**PROJECT: LRDE**





**PROJECT: LRDE DEFENCE**



**PROJECT: LEE WARE HOUSE**



**PROJECT: ASTRAZENECA**



**PROJECT: STRIDES ARCOLAB**



**PROJECT: TATA BP SOLAR**



**PROJECT: INTERNATIONAL STONES**



**PROJECT: TVS HOSUR**



**PROJECT: TYCO ELECTRONICS**

## **LATEST INSTALLATION**



**PROJECT : ALEXANRIA HYDRABAD**



**PROJECT : ALEXANRIA HYDRABAD**



## **LATEST INSTALLATION**



**PROJECT : MICROLAB HOSUR**



**PROJECT : STARRAG PEENYA BANGALORE**

## **LATEST INSTALLATION**



**PROJECT : BGS GLOBAL HOSPITAL BANGALORE**



**PROJECT : RITTAL INDIA BANGALORE**

AND MANY MORE... PLEASE VISIT OUR WEBSITE [www.concordindia.net](http://www.concordindia.net)